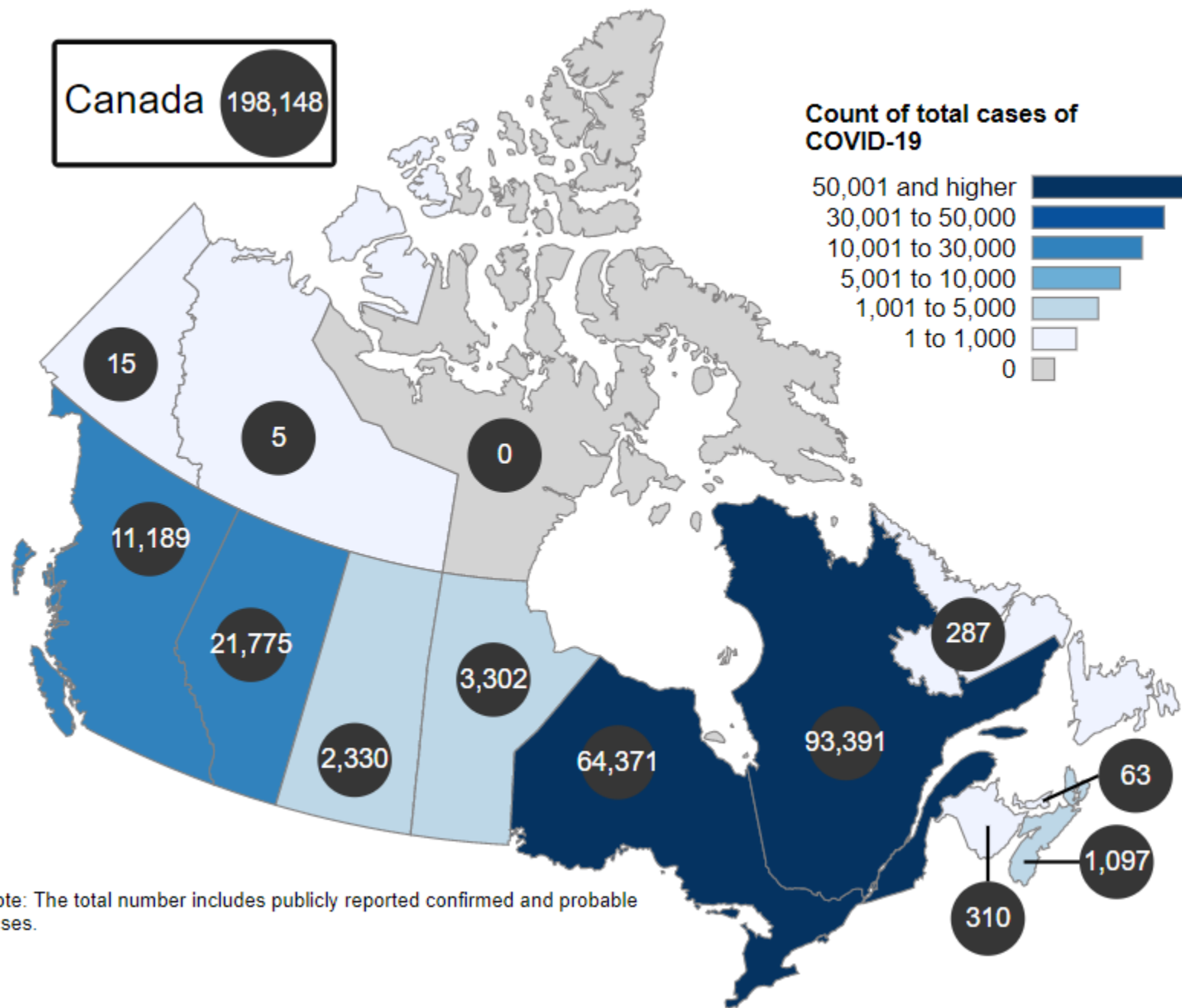


COVID-19 in Vancouver Coastal Health

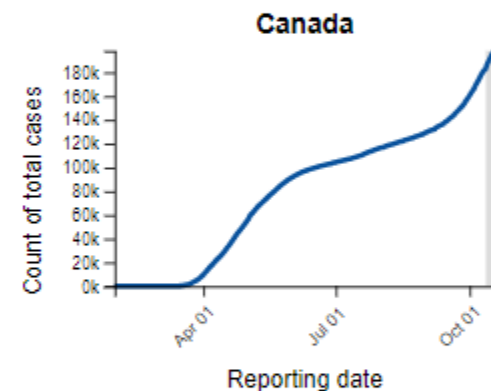
October 20, 2020

Dr. Patricia Daly
Chief Medical Health Officer
Vancouver Coastal Health



Note: The total number includes publicly reported confirmed and probable cases.

The count of total cases of COVID-19 in **Canada** was **198,148** as of October 18, 2020.



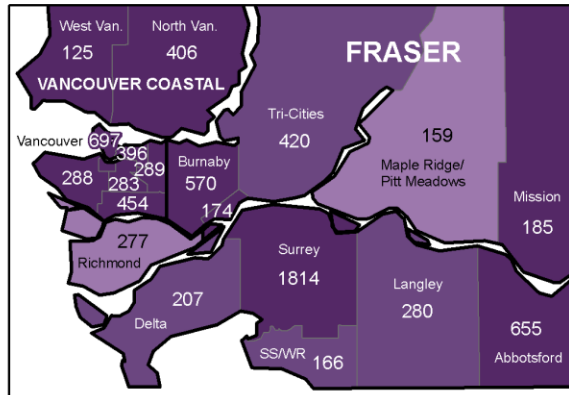
▶ Play .csv

Cumulative Cases January to September 2020

South Vancouver Island Inset

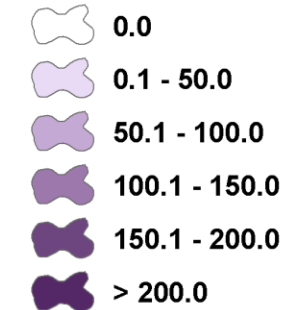


Greater Vancouver Inset

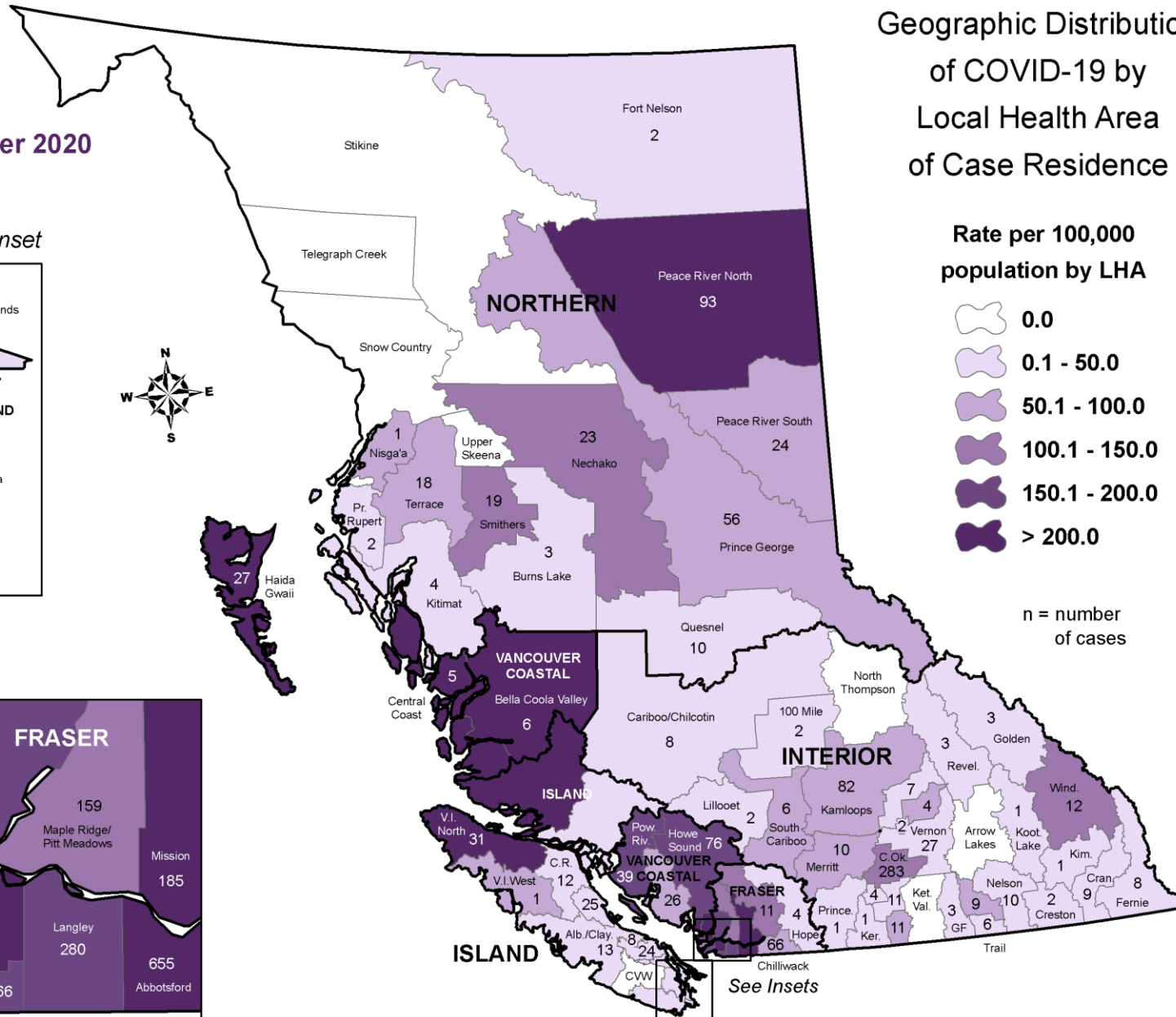


Geographic Distribution of COVID-19 by Local Health Area of Case Residence

Rate per 100,000
population by LHA

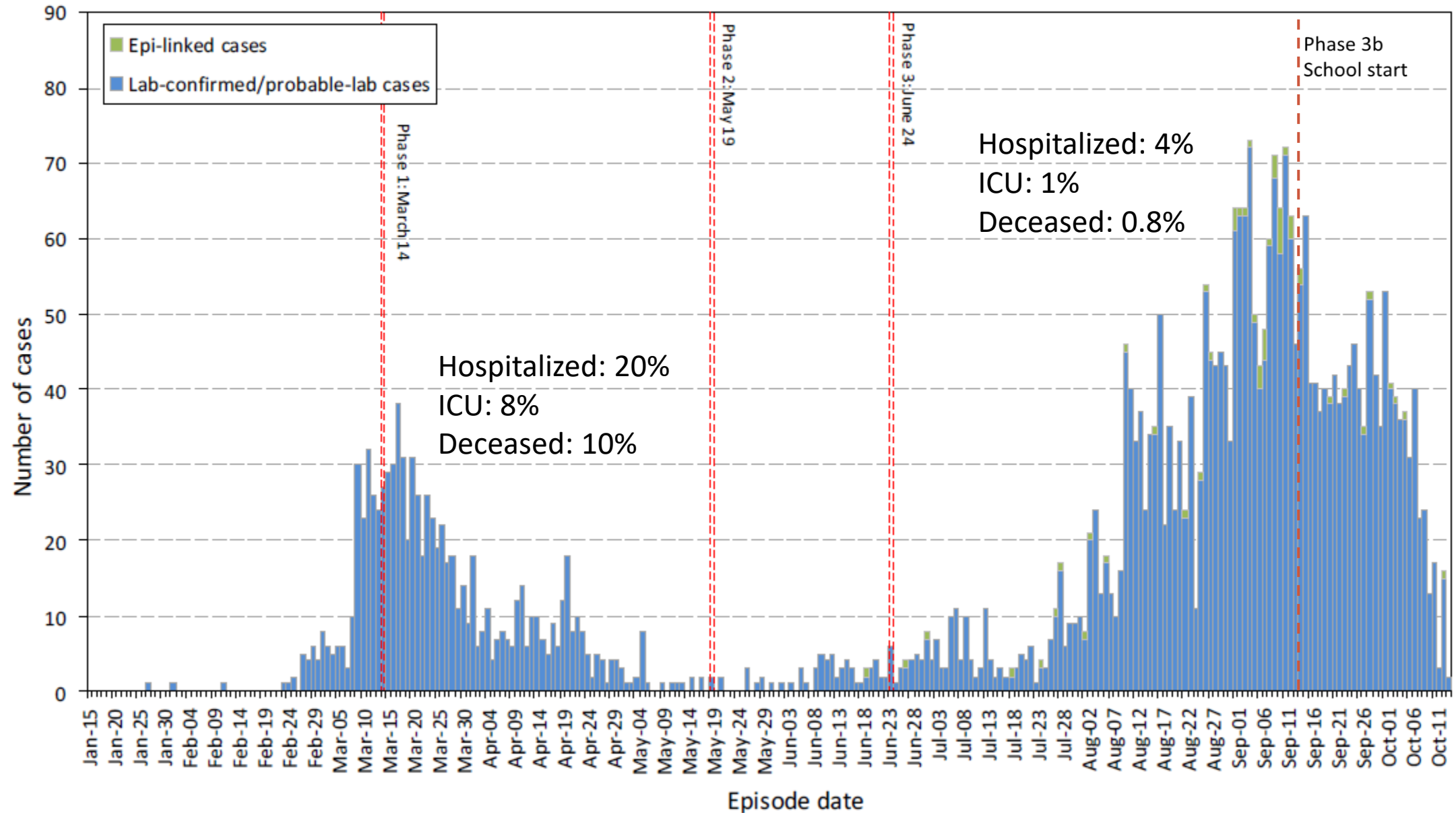


n = number
of cases



Notes: Cases are mapped by location of residence; cases with unknown residence and from out of province are not mapped. Data source: the 5 regional health authorities of British Columbia; we operate in a live database environment and case information from the health authorities are updated as it becomes available. How to interpret the maps: The map illustrates the geographic distribution of reported cases from January 1 to September 30, 2020. Local Health Areas (LHA) with higher rates are illustrated in darker colour shading. The number of reported cases appears in each LHA. Note that the number of cases in the LHA may not represent the location of exposure (e.g. people who acquired disease while traveling or working elsewhere), and that not all COVID-19 infected individuals are tested and reported; the virus may be circulating undetected in the community, including in areas where no cases have been identified by public health. Map created October 7, 2020 by BCCDC for public release.

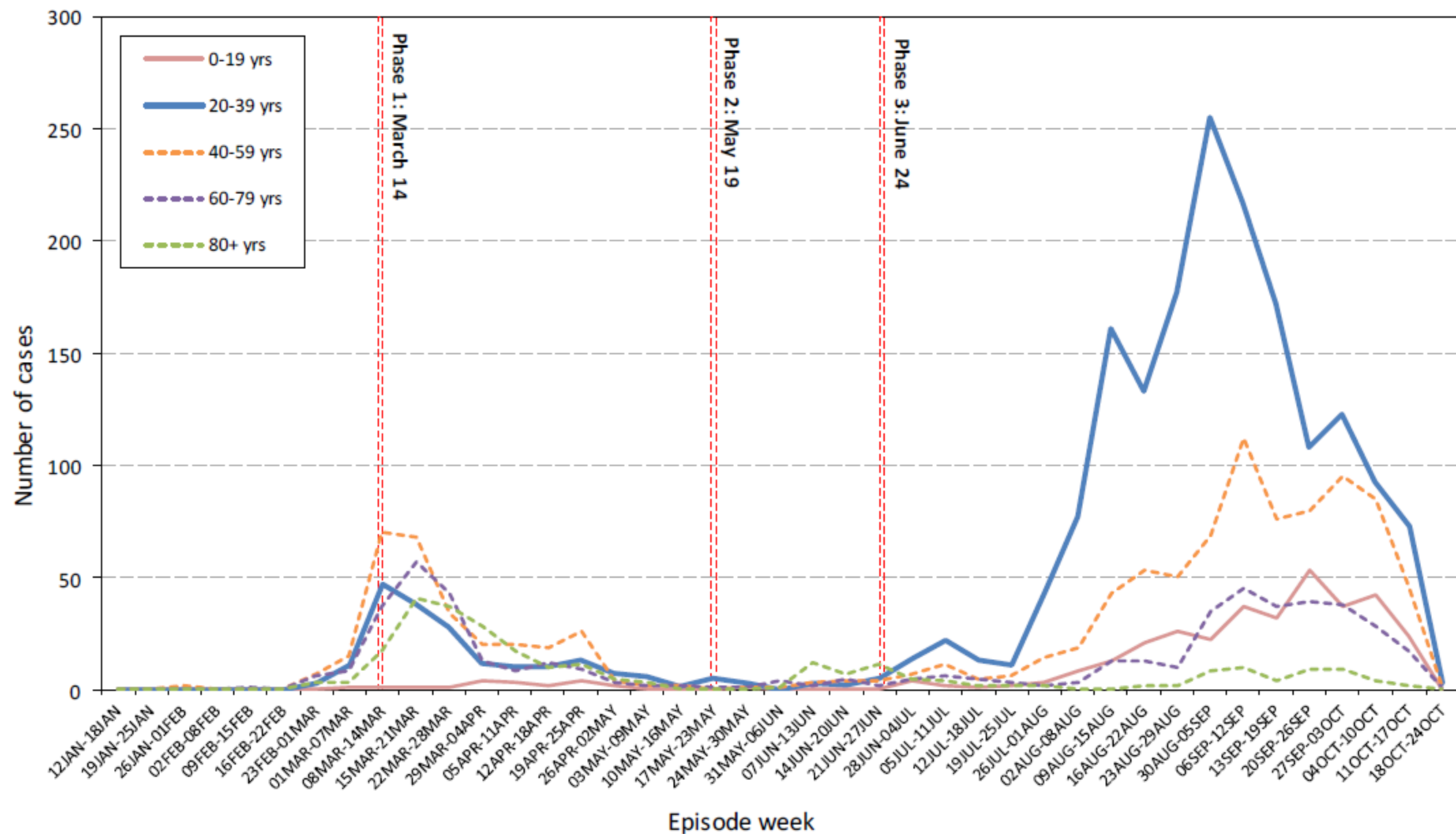
Figure 1b. Lab-confirmed/probable-lab (n=3,887) and epi-linked (n=54) COVID-19 cases by episode date* and BC's Restart Plan COVID-19 Phases**. Vancouver Coastal Health, January 15-October 14, 2020



Vancouver Coastal Health – COVID-19

- 4,146 cumulative cases January 15 – October 19, 2020
- 50% male, 50% female
- Age range:
 - 0-19 years – 8%
 - 20-39 years – 46%
 - 60+ years – 20%
- 125 deaths: Median age 87 years
 - 71% of deaths 80+ years of age
 - 67% of deaths among residents of longterm care facilities

Figure 5d. Lab-confirmed/probable-lab and epi-linked COVID-19 cases by age group* and epidemiological week** with reference to BC's Restart Plan COVID-19 Phases***. Vancouver Coastal Health, January 15-October 19, 2020



How is COVID-19 transmitted?

- Respiratory droplets produced when coughing, speaking
 - Travel 1-2 metres
- Primarily in indoor, uncontrolled settings
- Most cases occur in households or are known contacts of other cases
- Transmission occurs in clusters and social networks

BC Public Health Response to COVID-19

1. Locally developed diagnostic test, allowed us to identify cases
2. Public health follow-up of cases and their close contacts
 - Isolation of cases until non-infectious (10 days) and contacts until 14 days after their last exposure
3. Broad public health measures:
 - International travel and border restrictions
 - Limitations on mass gatherings (no more than 50 people for one-time events)
 - Closure of food, liquor and personal service establishments
 - Closure of schools and post-secondary institutions
 - Advice to stay home, socially distance

Health Care Services

1. Cancellation of elective surgeries
 - To create capacity in hospitals
2. Physicians directed to deliver care virtually, apart from urgent or emergent cases
 - To preserve PPE (personal protective equipment)

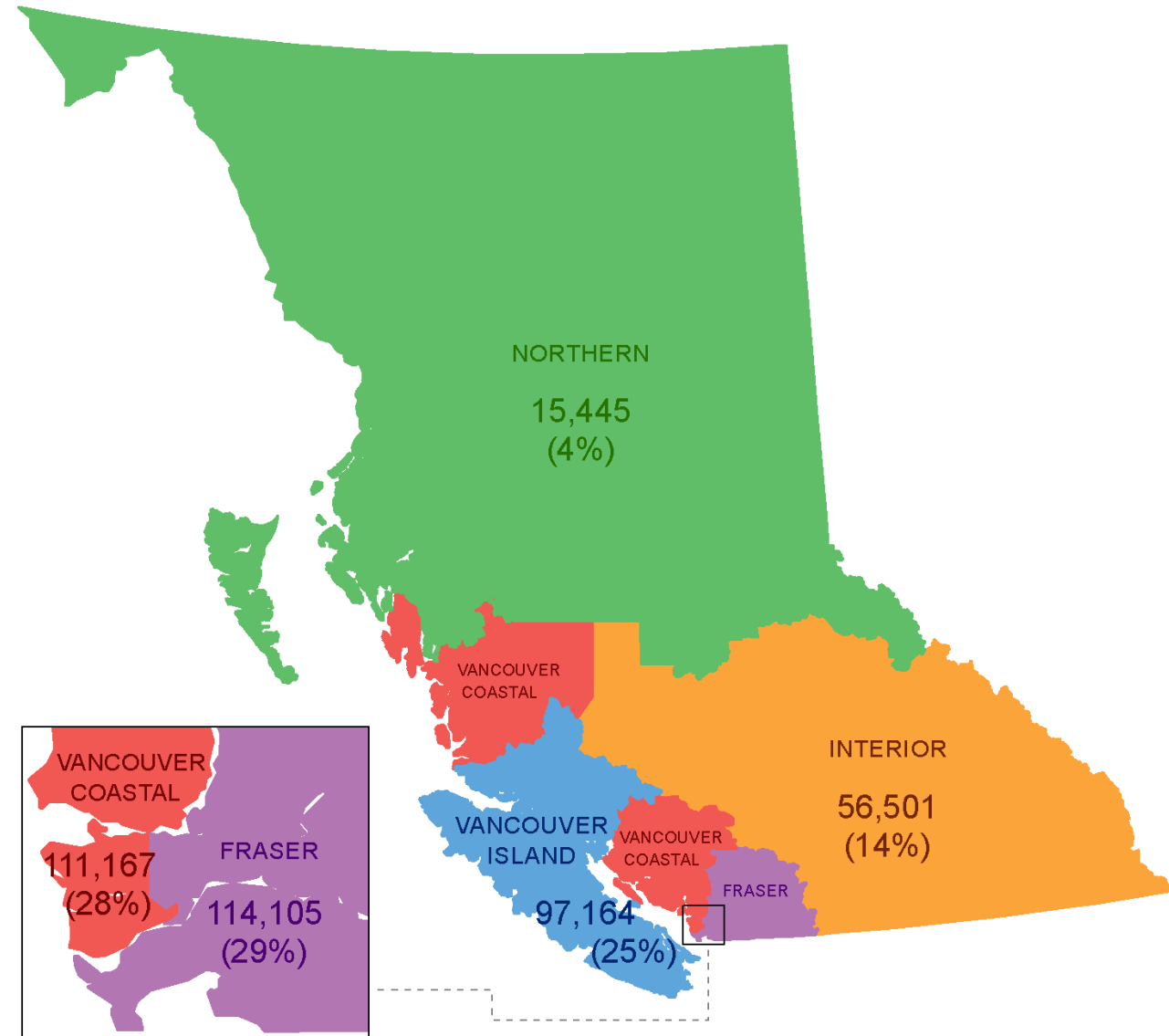
BC COVID-19 Population Health Survey

Your Story, Our Future

1 in 10 adult British Columbians completed the survey and are represented* in the results

n = 394,382

*age, gender, geography and 33% of survey progression



YOUR STORY

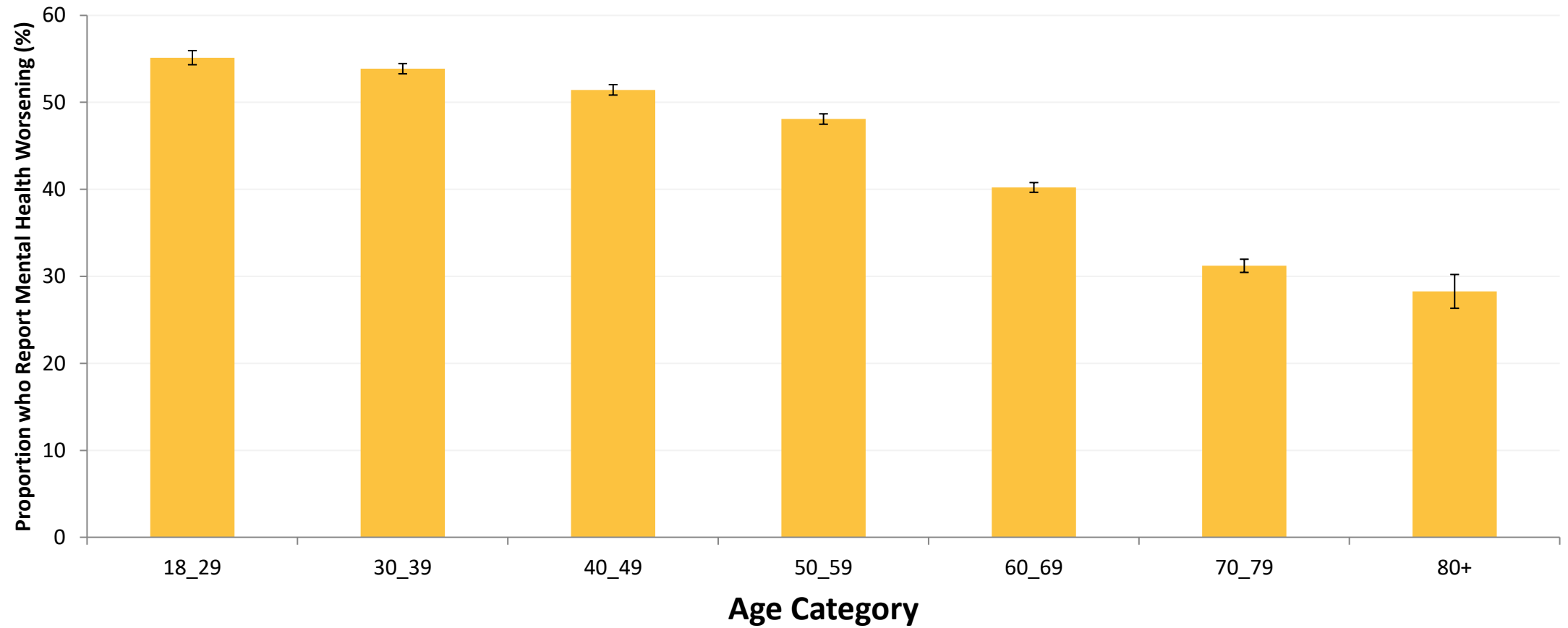
OUR FUTURE

BC COVID-19 Population Health Survey Results

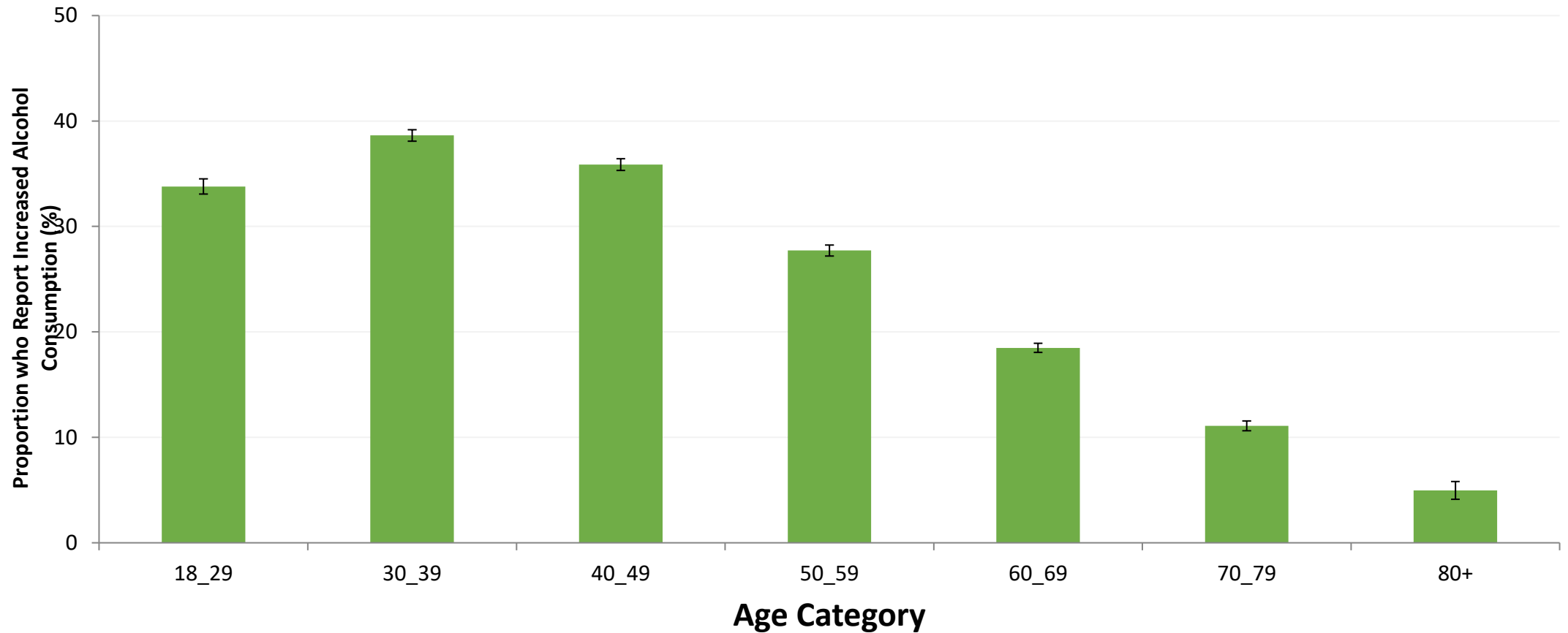
- Worsening mental health
- Increased alcohol consumption
- Increased food insecurity
- Increased difficulty meeting financial needs
- *Strong age and sex gradient, with women and young working-age adults most affected*

Source: BCCDC

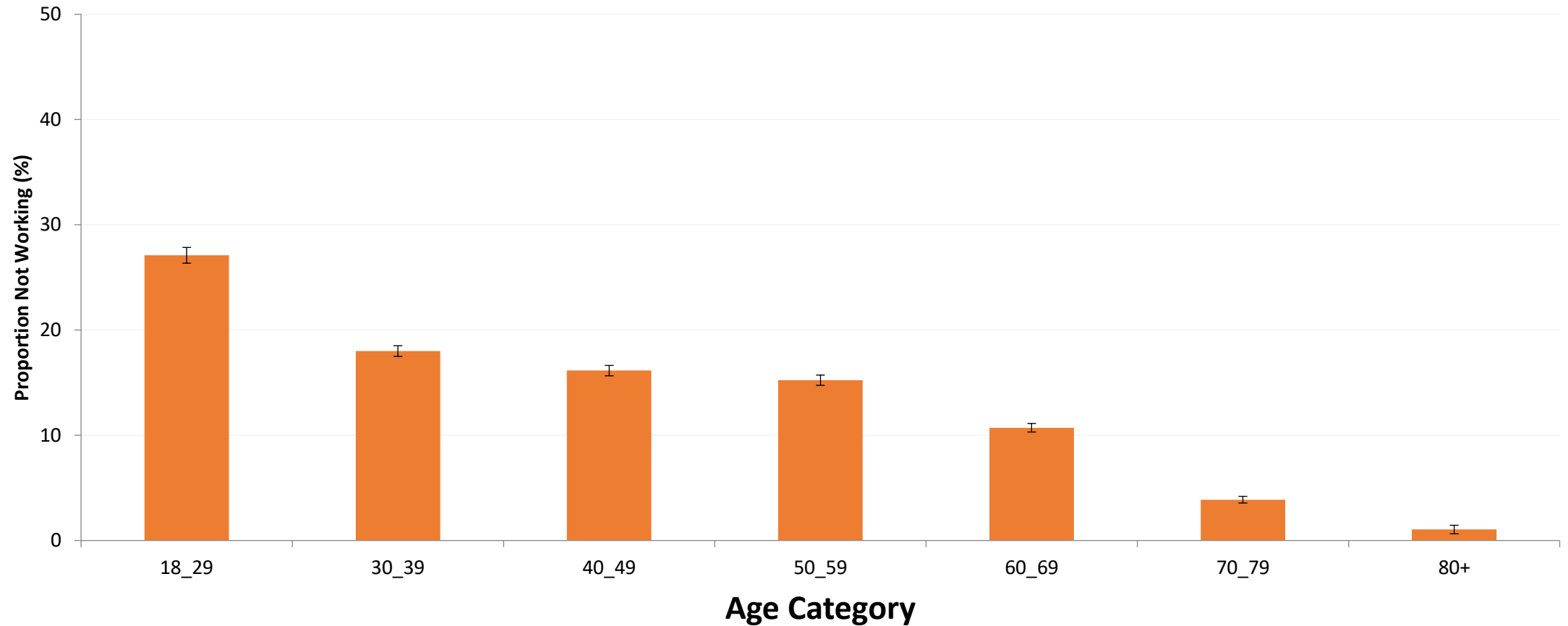
Mental Health Worsening



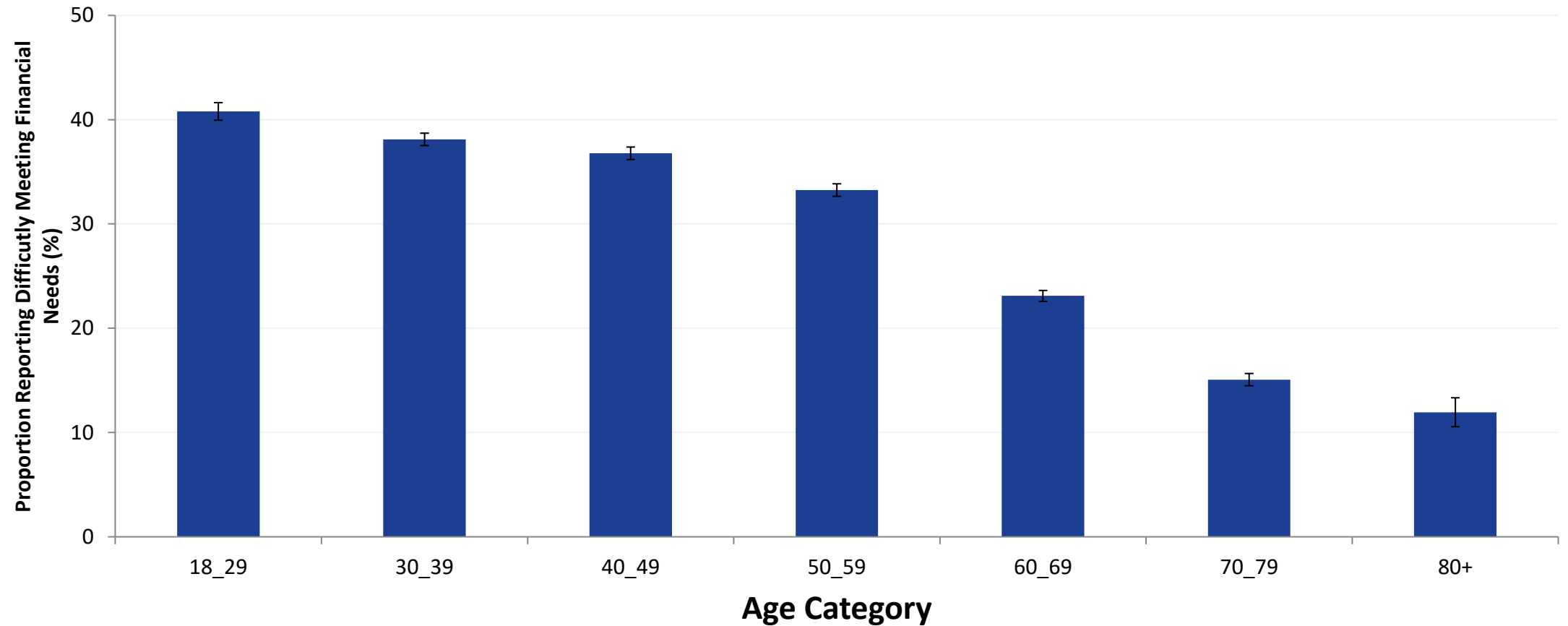
Increased alcohol consumption



Not Working Due to COVID-19



Increased difficulty meeting financial needs due to COVID-19

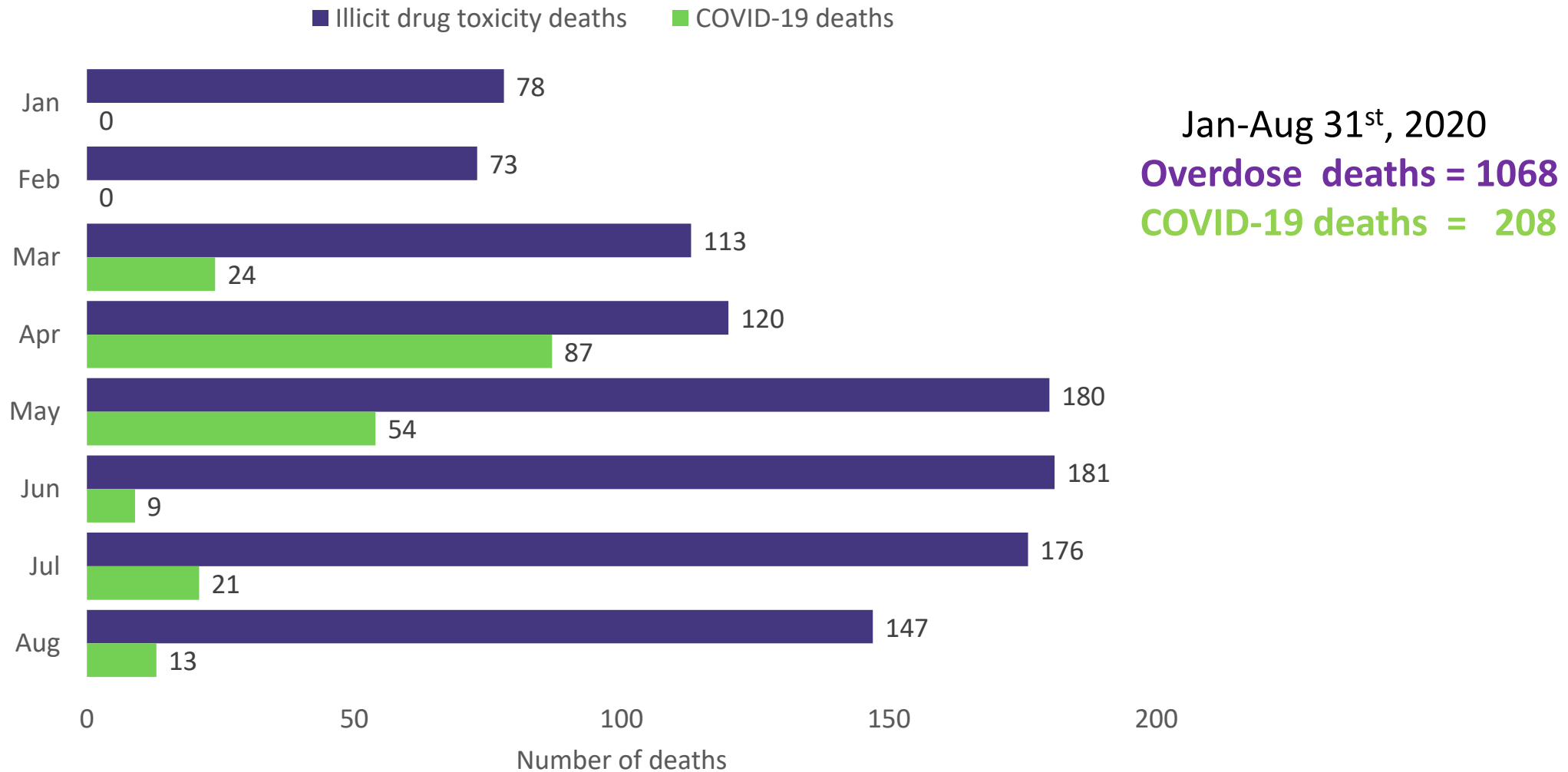


Unintended Health Consequences

- Suspended elective surgeries
- Closure of in-person primary care
- Delayed cancer screening and diagnosis
- Reduction in childhood vaccinations
- Social isolation in long term care



BC Illicit drug toxicity & COVID-19 deaths 2020



Source: Illicit drug toxicity death data provided to BCCDC by BC Coroners Service extracted 2020-09-18; COVID-19 death data from BCCDC

Unintended Economic Consequences

- Canada:
 - First quarter 2020 GDP drop largest since 2009, largest monthly decline since 1961
- BC:
 - Employment rate in April 2020: 51.2%
 - Employment rate in men 7% below the lowest ever recorded since the collection of labour force data began in 1976
 - 13% unemployment in June highest since 1987, even with some recovery
 - *Lowest wage earners and woman (service, sales) most affected*

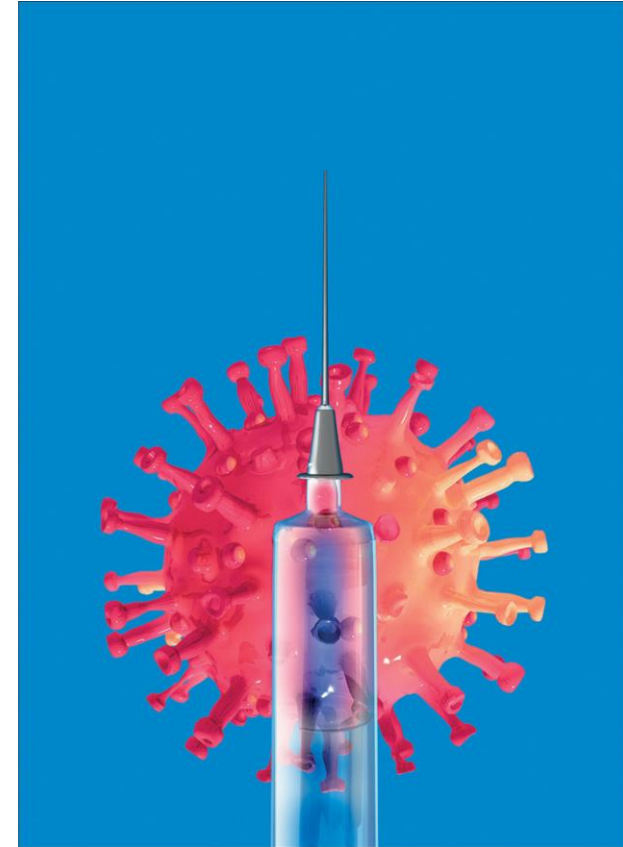
Compiled by Dr. David Green, UBC School of Economics

COVID-19 – What to expect this fall?

- *COVID-19 is here to stay*
- Some increased transmission as society reopens is expected
 - Re-open schools, universities, businesses - with COVID-19 safety plans
 - Protect those most vulnerable e.g. residents of longterm care
- Public health response: Appropriate testing, public health follow-up
- Health Care System:
 - Optimal outcomes for COVID-19 patients
 - Appropriate access and optimal outcomes for non-COVID patients

COVID-19 Vaccine Development

- Vaccine development has been fast-tracked and is promising
- All vaccines will require Health Canada approval
- Earliest vaccine arrival: 2021
- National recommendations for priority populations for vaccination:
 - Based on risk
 - Performance of the vaccines
- Plans for storage, distribution, supplies



Copyright © 2020 Victor Habbick Visions/Science Photo Library